



# AirTech

## HVAC Solutions

Better Air, Brighter Future

### Company Profile





<b>Name of Company :</b>	Airtech W.L.L.
<b>Year of Incorporation :</b>	Est. 2000
<b>Nature of Company :</b>	Limited Liability Company
<b>Owners/Partners :</b>	Mr. Michael Nagy, Chairman
<b>Board of Directors :</b>	Mr. Peter Yiacoumi, Managing Director
<b>Head Office :</b>	Building No-400, Road No-1507, Area-115 Bahrain International Investment Park, Kingdom Of Bahrain
<b>C.R. No :</b>	46343-1
<b>Legal Status :</b>	With Limited Liability Company

### LOCATION:

Bahrain Industrial Investment Park in Hidd at Bldg No. 400, Road 1507, Block 115.

### FACTORY:

Covered Area of 7500 Sq. Mtr. Opened Area of 1200 Sq. Mtr.

### PRODUCTION CAPACITY:

7,000 Sq. Mtr. of ducting per month.

### OUR VISION:

Our vision is to be the leading Designer, Manufacturer and Supplier of HVAC ducting systems and components to provide a better, safer and healthier life for people everywhere.

### CORE PRINCIPLES:

Consistency, Efficiency, and Reliability.

### OUR VALUES:

People  
Service  
Innovative  
Forward Thinking

### CORE DISCIPLINES:

High definition plasma cutting, custom fabrication, duct fabrication, complete HVAC systems, exhaust systems, thermal and acoustic insulations, heavy steel work, shearing, cutting, stamping, punching, grinding, forming, welding and designing.

### OPERATIONS:

Design, manufacturing and on site services for HVAC systems

### PRODUCTS & SERVICES:

- Manufacturing Galvanized sheet metal ducts for HVAC requirements as per DW144/SMACNA/ASHARE.
- Installation of Stainless Steel duct works as per the client drawings according to the standards of DW144/SMACNA/ASHARE.
- Thermal insulation of duct works as per DW144/SMACNA/ASHARE.
- Acoustic insulation of duct works as per DW144/SMACNA/ASHARE.
- Production/installation of Stainless Steel/Black Steel ducting for kitchen Extract systems according to DW172 standards.
- Manufacture, supply and installation of Volume Control Dampers with multiple opposite blade system with state of the art technology.
- Fabricate, supply and install Access Doors and Non-Return Dampers as per site requirements.
- Fabricate, supply and install Fire Dampers (Fusible Link Type)
- Fabrication, supply and installation of pre-insulated duct works with branded panels such as P3 / PIR / ALU etc.
- Aluminum Cladding for duct works and pipes with plain/stucco embossed aluminum sheets.
- Manufacture and supply complete range of Air Terminal Devices including Grilles, Registers, Diffusers, Louvers etc.
- Fabrication, supply and installation of Sound Attenuators and Chiller Enclosures
- Fabrication, supply and installation of Sand Trap Louvers

### INTERNATIONAL MANAGEMENT STANDARDS:

Quality Management System	ISO 9001:2008
Environmental Management System	ISO 14001:2004
Occupational Health and Safety	OHSAS 18001:2007

### INTERNATIONAL MANUFACTURING STANDARD:

Airtech conduct all design, practical work and manufacturing in strict accordance to applicable regulations. Our own quality policy insists that all works are carried out to the highest standard. More specifically Airtech applies the doctrine of the following guidelines to all projects where required.

DW144 – Specification for Sheet Metal Works – Low, Medium and High Pressure / Velocity Air System

SMACNA – Sheet Metal & Air Conditioning Contractors' National Association

ASHARE – American Society Of Heating, Refrigeration & Air Conditioning Engineers

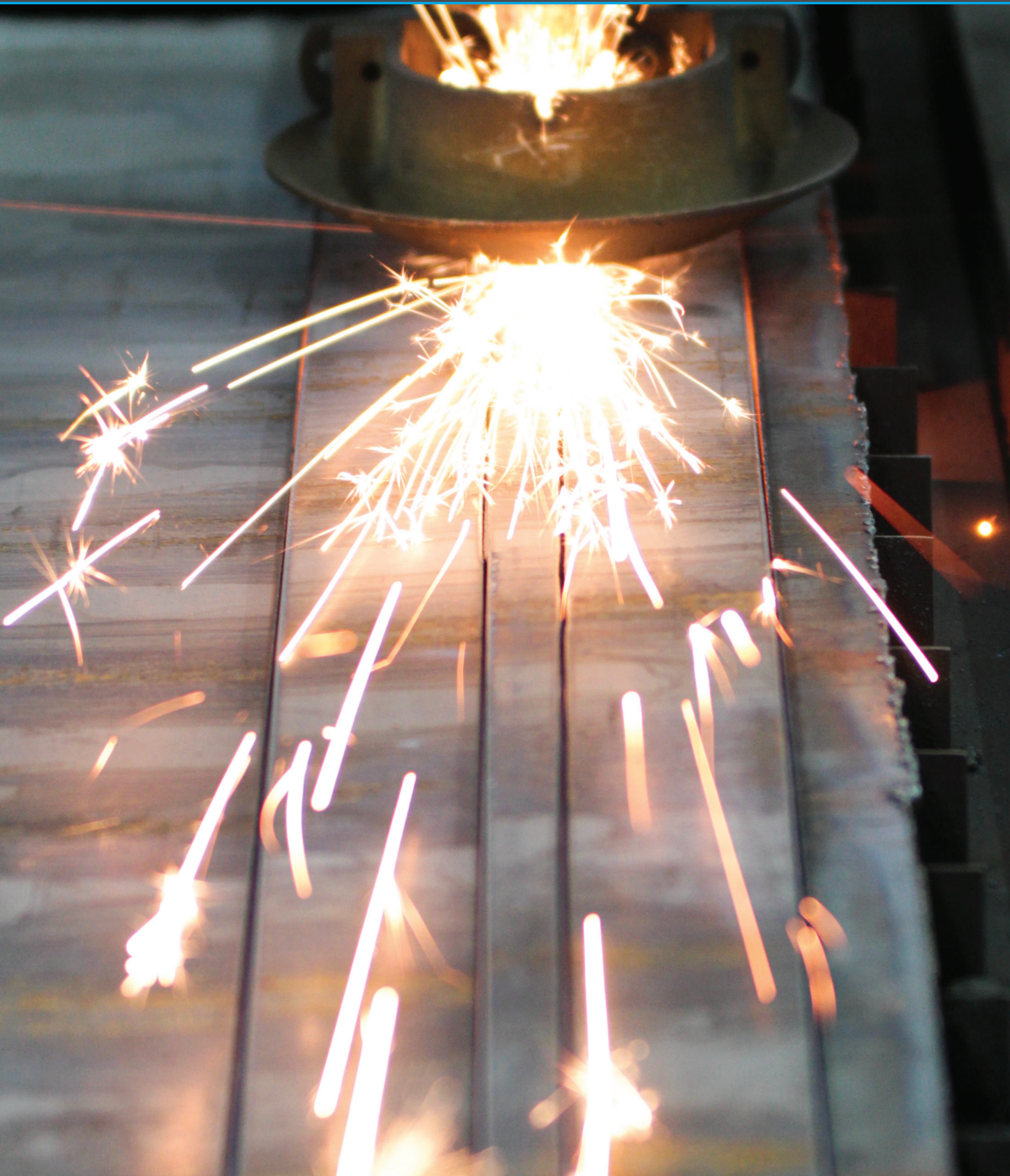
### DIVISIONS:

- Design & Onsite Services
- Industrial Engineering
- Service Maintenance

### DESIGN & ONSITE SERVICES:

Airtech offer a full design, manufacturing and installation service for the complete range of HVAC systems. Our designs use the latest CAD and thermal modelling software and are built to the latest international manufacturing standards (DW144, SMACNA, ASHARE).

Using the expertise of our 'in house' design engineers calculations can be carried out to provide heat losses / gains, condensation / dew point risk, required insulation thicknesses etc. Thereafter any number of permutations can be provided to help you achieve your desired targets.



### INDUSTRIAL ENGINEERING:

Airtech Industrial Engineering Division unifies the broad expertise and experience needed to build world class Industrial Engineering Process plants and Equipment incorporating the latest technology and technical know how. We provide each client and project the perspective of the full life cycle from consultation through to construction, to operation and maintenance and refurbishment.

Airtech functions as a critical link to its successful operation to the various process industries by providing the support that inspects, installs and tests the systems, trains your operators and writes your manuals and provides the maintenance service that keeps the system running. We ensure that spare parts are available and delivered in time . We maximise the systems useful life by defining long term quality programs.

### SERVICE MAINTENANCE:

Airtech has established maintenance contracts around Bahrain, ranging from supporting small local businesses to providing dedicated support to national companies with multi site locations.

### PRODUCTION MANAGEMENT

Our factories are well-equipped with a wide range of state-of-the-art machinery for the efficient and express production of HVAC systems and Accessories. Airtech state of art latest CNC machines provide accurate and quality processed fabricated components and contribute to a faster processing of end product. Our technologically advanced facilities allows Airtech to maintain it's position as a reliable, efficient, and cost-sensitive partner for large and small-scale projects alike.

### HUMAN RESOURCES:

Airtech has trained, qualified and dedicated staff on all levels of production and installation. Our valued work force includes citizens of India, Bangladesh, Sri Lanka, Phillipines & Nepal. We have a dedicated training division to help channel employees' talents in favour of the company's different functions.

Below is a current profile of the company's pool of human talent:

Position	No. of workers
Engineering & Project Management	6
Store & logistics, Accounts	5
QA/QC	2
Safety	2
<b>Production</b>	
a) Fabricators	6
b) Skilled workers	30
<b>Installation</b>	
a) Supervisors	4
b) Duct Men	30
c) Insulators	30
d) Semi-skilled workers	80



Airtech management is confident that its current manpower is quite sufficient to take up the demands of the market in projects of every caliber in anticipation of the expansion of our projects and capabilities. We currently have made arrangements with different manpower recruitment agencies for conducting immediate recruitments to meet the future demands.

### QUALITY CONTROL / QUALITY ASSURANCE

Our Quality Assurance Plan is accredited to ISO-9001:2008. The official standard relates to the Quality Management systems we have in place and our investment in developing internal processes, maintaining accurate records and improving employee knowledge. Therefore this accreditation is a clear measure of the effectiveness of the systems and processes we sustain within the company.

### QUALITY SYSTEM TARGETS:

- Customer satisfaction through proper evaluation and definition of its real needs.
- Continuous improvement of its products and systems.
- Production efficiency in meeting customer needs continuously.
- Optimization of available resources.
- Continuous improvement of the effectiveness of processes and system quality performance.

### HEALTH, SAFETY AND ENVIRONMENT POLICY:

Our Occupational Health and Safety standards are accredited to OHSAS 18001:2007

- Airtech provides safe working environment to ensure protection for its clients, employee properties and operations against risk of injury and loss or damage
- Airtech assures that Safety is the responsibility of every body and enhances the safety awareness for all its employees to make safety a part of their performance.
- Airtech complies with all local laws and status and the relevant international standards concerning HSE.

### DELIVERY:

Airtech have partnered with logistic operators to ensure full GCC wide delivery of our full range of products and accessories.

### Onsite Installations:

All Airtech products are available with fully qualified teams of fitters in Bahrain as well as GCC through strategic partners.

### Tagged Labels:

Airtech employs a labeling system that specifies the project area, and unit number to more easily manage finished duct works upon arrival at the site.

### Fully Insured:

Airtech holds full public, employers and product liability suitable for large scale projects



**AIRTECH SELECTED PROJECTS**



## AIRTECH SELECTED PROJECTS



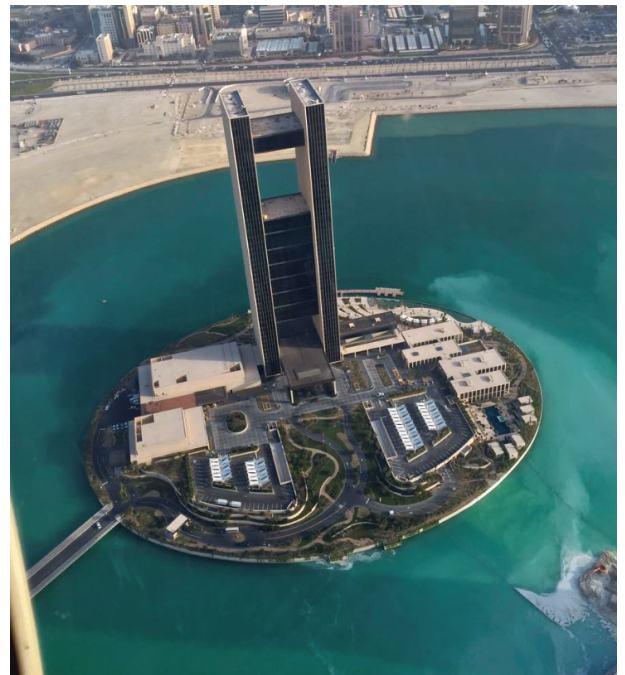
### FOUR SEASONS HOTEL

**Client:** Stone Company S.P.C.  
**Location:** Juffair, Bahrain  
**Main Contractor:** Six Construct  
**Consulting Engineer:** COWI

The iconic Four Seasons Hotel project is a luxury hotel development situated on a fully landscaped, reclaimed island in the prestigious Bahrain Bay development.

The new hotel comprises a waterfront community with 68 stories, 260 guest rooms and a penthouse level 'Sky Pod' restaurant which offers extensive views over Bahrain and the Arabian Gulf.

The hotel is designed with two 201.5m 42 storey tall towers. The main contractor was Six Construct and MEP contracting by Mercury Middle East WLL. Airtech was responsible for the installation of 26,000 Sq Meters of HVAC duct works and components throughout the building.



### AIRTECH SELECTED PROJECTS



### NATIONAL THEATRE OF BAHRAIN

<b>Client:</b>	Ministry Of Works
<b>Location:</b>	Manama, Bahrain
<b>Main Contractor:</b>	Cybroc W.L.L.
<b>Consulting Engineer:</b>	WS Atkins & Partners Overseas

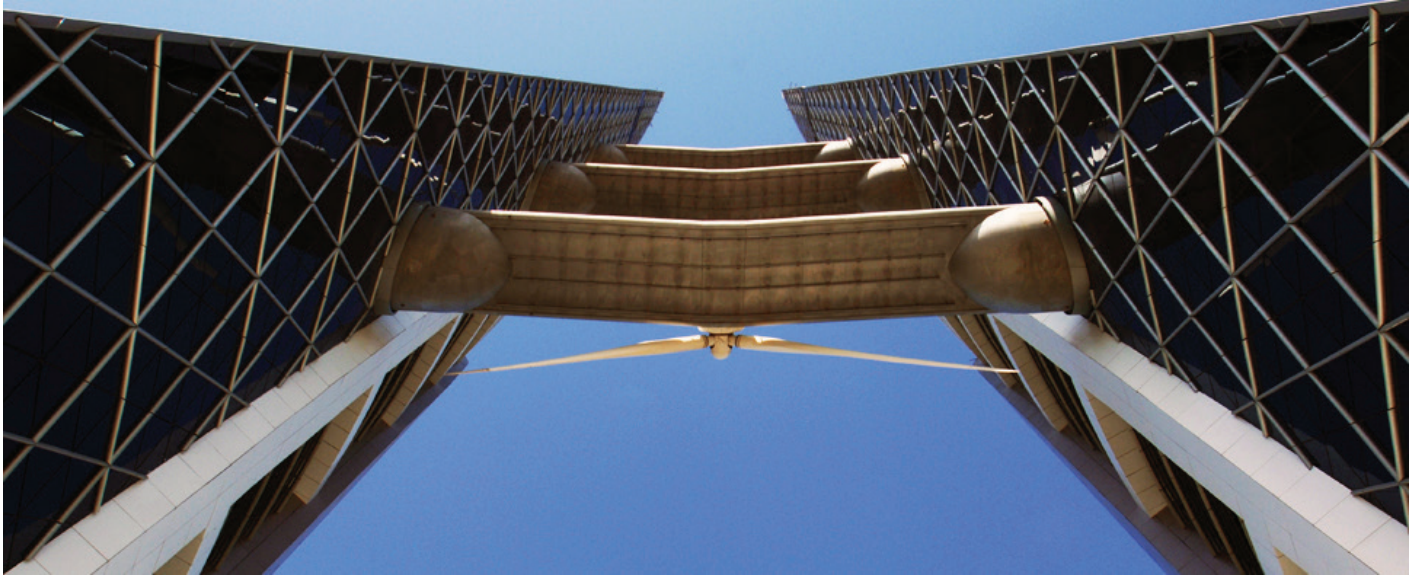
The National Theatre of Bahrain is a waterfront building complex situated in Manama next to the Bahrain National Museum, and consists of a main 1001-seat auditorium and a smaller 150-seat flexible studio theatre. Opened on 12 November 2012 and costing \$50 million, the theatre encompasses an area of 11,869 square metres (127,760 sq ft) making it the third largest theatre in the Middle East. The theatre was designed by the French company Architecture-Studio, with Atkins serving as the local consultant.

The building's air-conditioning units had to be out of view of visitors for aesthetic reasons and a vent system had been designed that encompassed the entire perimeter of the building bringing cool air through hidden grilles between the glass. Airtech has undertaken the fabrication, supply and installation of the complete HVAC ductworks consisting of 10, 256 Square meters and aluminum cladding, fabrication and installation.

**AIRTECH SELECTED PROJECTS**



### AIRTECH SELECTED PROJECTS



### BAHRAIN WORLD TRADE CENTRE

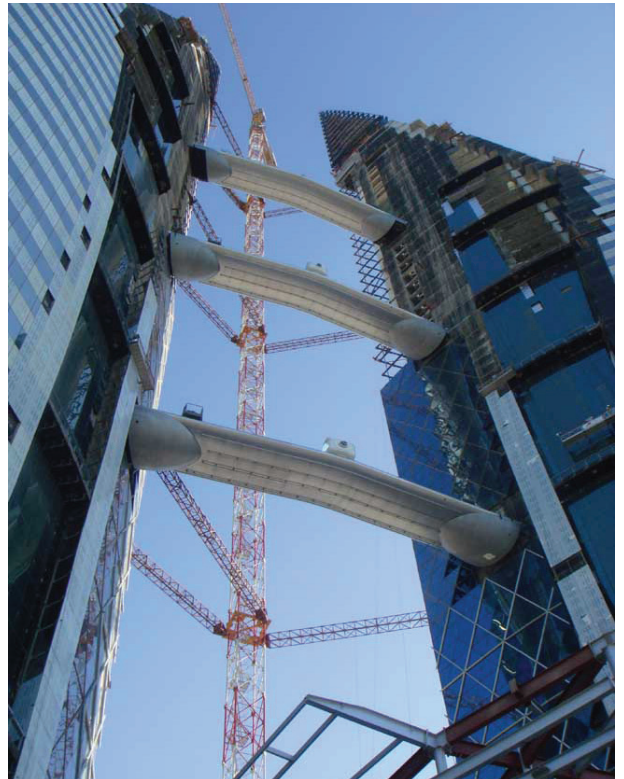
**Client:** Bahrain World Trade Centre  
**Location:** Manama, Bahrain  
**Main Contractor:** Nass Murray Roberts JV  
**Consulting Engineer:** WS Atkins & Partners Overseas

The Bahrain World Trade Center is a 240-metre-high (787 ft), 50-floor, twin tower complex located in Manama, Bahrain. The focal point of the development is the twin triangular shaped towers which sit above a sculpted three-story podium. It is the first skyscraper in the world to integrate wind turbines into its design.

Airtech has been entrusted with the installation and commissioning of complete HVAC ducting system for the entire building as per DW144 standard for HVAC ducting.

Airtech scope of work consists of:

- Fabrication, supply & installation of Galvanized Iron Duct works as per DW144 standards for 170 Air Handling Units.
- The Total area of Ducting fabricated, supplied & installed was 70,000 Sq Mtrs of Thermally insulated Galvanized ducting.
- Aluminum cladding with Stucco embossed aluminum sheets for plant room duct works and chiller pipes covering 15000Sq Mtrs and 7500 Sq Mtrs respectfully



### AIRTECH SELECTED PROJECTS



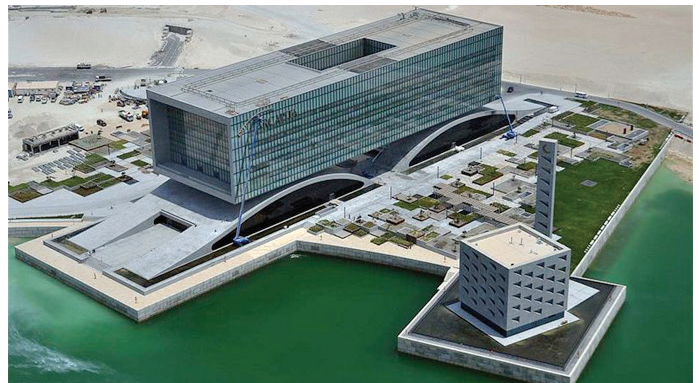
### ARCAPITA BANK, BAHRAIN BAY

**Client:** Arcapita Bank BSC  
**Location:** Bahrain Bay  
**Main Contractor:** Nass Murray Roberts JV  
**Consulting Engineer:** Mace International

The Arcapita Bank Head Quarters is located at Bahrain Bay at the very heart of the development, the design of Arcapita's headquarters features an imposing horizontal glass structure which has been built and finished to the very highest standards.

Airtech has fabricated and installed the complete HVAC ducting system as per DW144 standards. Airtech Scope of works consists of :

1. Fabrication, supply and installation of Galvanised steel duct works for the 3000 TR capacity Air handling Units (AHUs) as per DW144 standards.
2. The total area of ducting fabricated, supplied and installed was 28000.sq mtrs out of which 3000 Sq mtrs are of acoustically treated duct works.
3. Installation of approx 3000 square air outlets.
4. In the AHU ducting lines we have installed approx 2500 Nos of inline accessories VCDs, MSFDs, Access Doors etc.
5. Installation of approximately 400 Linear meter of slot air outlets.



## AIRTECH SELECTED PROJECTS



### KING HAMAD GENERAL HOSPITAL, MUHARRAQ

<b>Client:</b>	Ministry of Works and Housing
<b>Location:</b>	Muharrag
<b>Main Contractor:</b>	Nass Electrical JV / Burhan
<b>Consulting Engineer:</b>	Australian Hospital Design Group

King Hamad General Hospital was designed and constructed as 3 Blocks of 4 storey buildings. The hospital includes accident and emergency, imaging, operating theatres, labour and delivery suite, 312 beds including day ward, outpatients department, teaching facilities for adjacent Medical University, and helipad.

The Australian Hospital Design Group (AHDG) was the Consultant team responsible for the design of the \$130 million building and comprises CS+T Architects Pty Ltd, Connell Mott MacDonald Engineers, Davis Langdon Australia Quantity Surveyors, Denton Corker Marshall Design Architects and Ismail Khonji Associates Engineers. Main Contractor is a Joint Venture between Bahrain based Nass Contracting and the Burhan International Construction Company of Kuwait and EMCO with Nass Electrical Joint Venture are the Mechanical and Electrical services Contractor.

Aesthetically, the Hospital has been designed so that the building will have no "back", will take advantage of the views, and will provide Bahrain with a landmark facility of high international standard.

Airtech scope of work consists of :

1. Fabrication, supply and installation of Galvanized steel Duct works as per DW144 standards for a total 3000 TR capacity units.
2. The Total area of HVAC ductworks fabricated, supplied and installed was 52,000 Sq Mtrs of Thermally insulated Galvanized ducting.
3. Aluminum Cladding with Stucco embossed aluminum sheets for plant room duct works covering an area of 3000 Sq Mtrs.
4. Aluminum Cladding with Stucco embossed aluminum sheets for chiller pipes at plant room covering an area of 1400 Sq Mtrs
5. In the AHU ducting line we have installed approx 12000 Nos of inline accessories such as Volume Control Dampers, Fire/Smoke Dampers, VAVs, Access Doors etc.
6. Installation of approximately 4000 square air outlets.
7. Installation of approximately 700 linear meters of slot air outlets.

## AIRTECH SELECTED PROJECTS



### TABREED DISTRICT COOLING PLANT

**Client:** Tabreed Bahrain  
**Location:** Manama, Bahrain  
**Main Contractor:** Nass Contracting  
**Consulting Engineer:** Gulf House Engineering

The Tabreed Northshore District Cooling project is a joint venture formed by Tabreed, Esterad and A.A. Bin Hindi. The parallel 900mm diameter insulated carbon steel pipes carry district cooling water from the Diplomatic Area chiller plant to the Atkins-designed Bahrain World Trade Center, Bahrain Financial Harbour, Reef Island and other northshore developments.

Airtech scope of works consists of:

- Fabrication, supply & installation of HVAC duct works as per DW144 standards for 24000TR.
- The Total area of HVAC ducting fabricated, supplied & installed was 25,000 Sq Mtrs of Thermally insulated Galvanized ducting with Aluminium Cladding.
- Fabrication, supply and installation of Fire Dampers, VCDs and NRDs



### ARABIAN SUGAR FACTORY

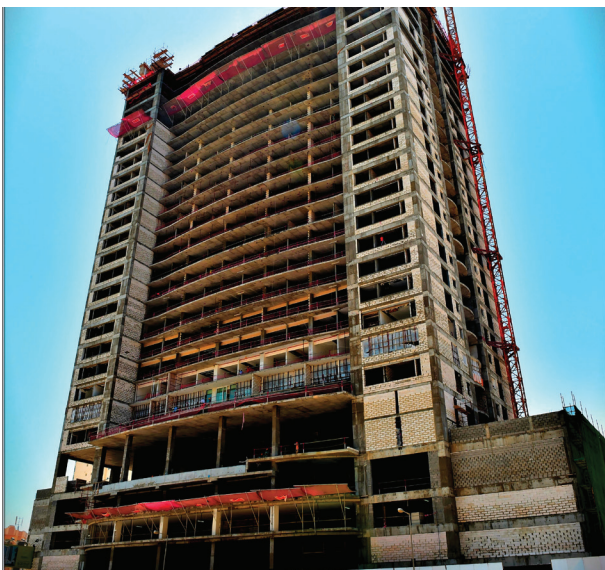
**Client:** Arabian Sugar Company B.S.C. (C)  
**Location:** Bahrain International Investment Park (BIIP)  
**Main Contractor:** Alliance Projects  
**Consulting Engineer:** OMEGA

Arabian Sugar Company extends over 95,000 Sq.Mtrs, is a \$150m million state of the art factory with a designed yearly production capacity of over 600,000 tons of high grade refined sugar.

Airtech has undertaken the complete cladding works, manufacturing and installation with a total area of 12,000 Sq.Mtrs and also fabrication and installation of tanks for sugar refining.



## AIRTECH SELECTED PROJECTS



### FONTANA TOWER

<b>Client:</b>	The Developers WLL
<b>Location:</b>	Juffair, Bahrain
<b>Main Contractor:</b>	Kooheji Contractors W.L.L
<b>Consulting Engineer:</b>	Aref Sadeq Design Consultant

The Fontana Towers is a luxury condominium by the sea front located in Juffair, Bahrain. The building consists of 2 high rise towers, both 29 stories high and 400 apartments.

### FONTANA GARDENS

<b>Client:</b>	The Developers WLL
<b>Location:</b>	Juffair, Bahrain
<b>Main Contractor:</b>	Kooheji Contractors W.L.L
<b>Consulting Engineer:</b>	Arab Architects

Fontana Gardens by Kooheji Contractors is built around the concept of community living. Comprising 400 apartments tastefully laid out in a choice of 17 configurations in three Towers of Residential Apartments, comprising of a total built up area of 102,000 SQM

### FONTANA SUITES

<b>Client:</b>	The Developers WLL
<b>Location:</b>	Juffair, Bahrain
<b>Main Contractor:</b>	Kooheji Contractors W.L.L
<b>Consulting Engineer:</b>	Arab Architects

Fontana Suites \$75-million property development offers 387 apartments covering an area of 62,000 SQM. The project is the first-of-its-kind providing large green areas and a hanging gardens concept.

### CONTACT:

#### Customer Service

Please contact AirTech on the numbers below:

Tel. : +973 17 675 599

Fax : +973 17 675 800

Email : [support@airtech.com.bh](mailto:support@airtech.com.bh)

#### Technical Advisory Service

AirTech team of engineers and technocrats supports all of its products with a comprehensive Technical Advisory Service for specifiers and contractors. Calculations can be carried out to provide heat losses / gains, condensation / dew point risk, required insulation thicknesses etc... Thereafter any number of permutations can be provided to help you achieve your desired targets.

AirTech can also give general application advice and advice on design detailing and fixing etc... Site surveys are also undertaken as appropriate.

Please contact AirTech on the numbers below:

Tel. : +973 17 675 599

Fax : +973 17 675 800

Email : [technical@airtech.com.bh](mailto:technical@airtech.com.bh)

#### Literature & Samples

Please contact AirTech on the numbers below:

Tel. : +973 17 675 599

Fax : +973 17 675 800

Email : [samples@airtech.com.bh](mailto:samples@airtech.com.bh)

#### General Enquiries

For all other enquiries contact AirTech on the numbers below:

Tel. : +973 17 675 599

Fax : +973 17 675 800

Email : [info@airtech.com.bh](mailto:info@airtech.com.bh)